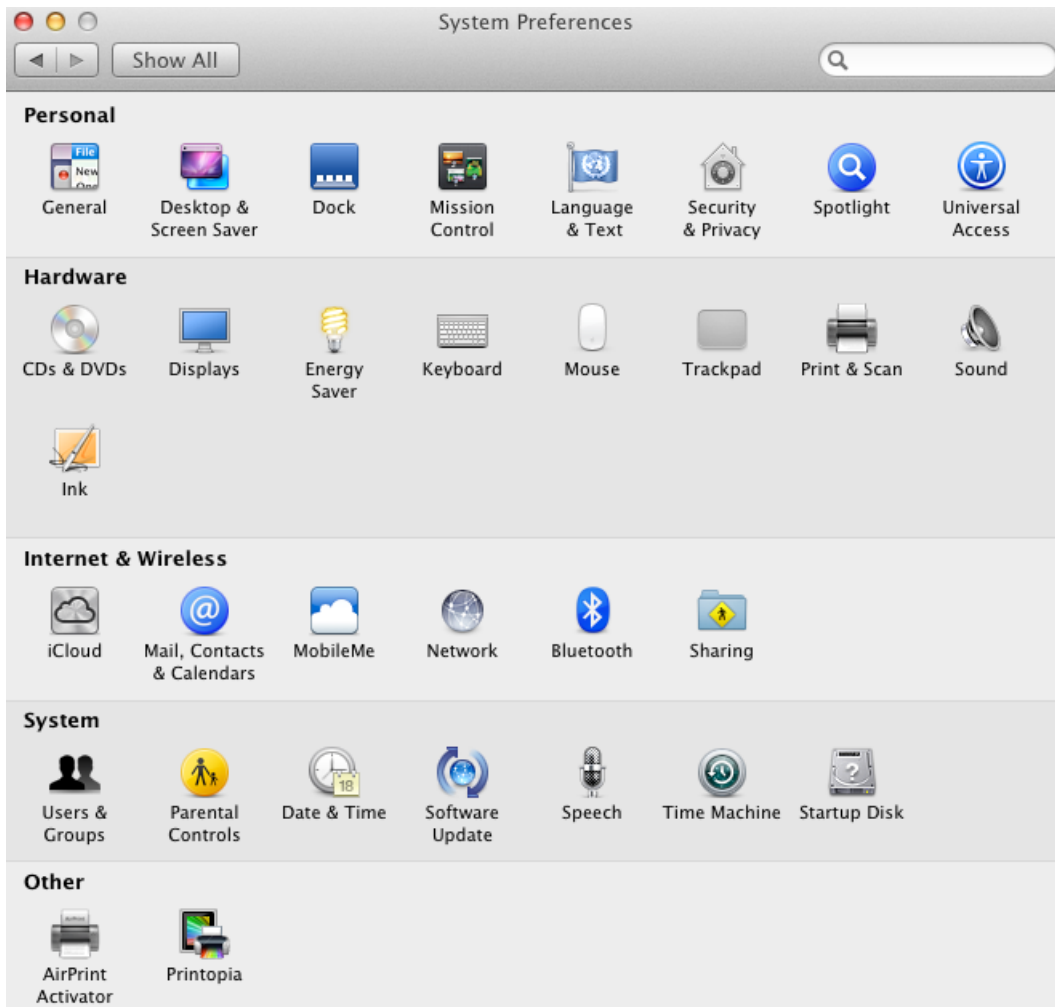


Connecting a Mac Device to Jayhawk2 Wi-fi

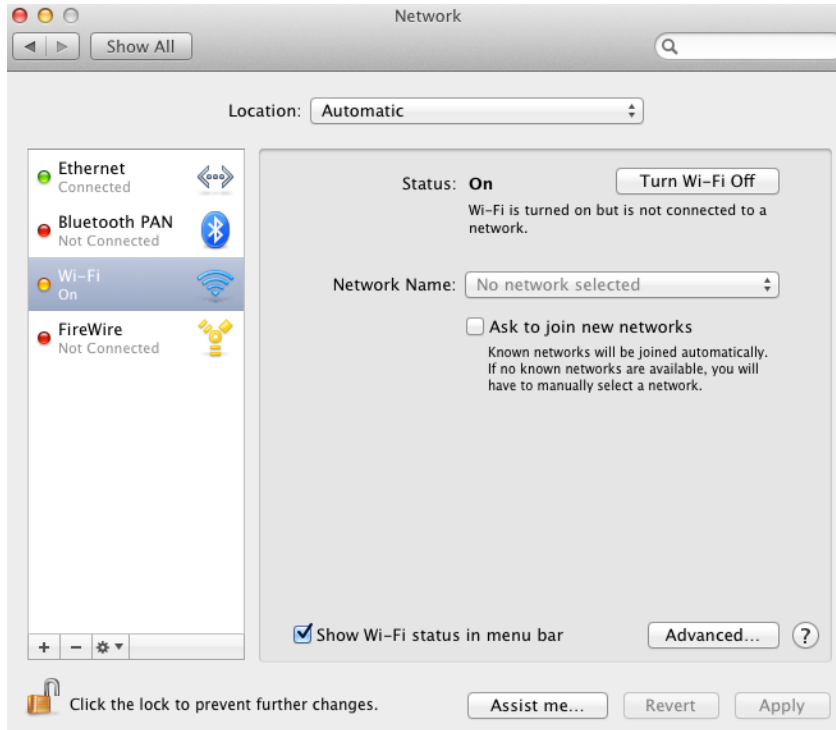
1. Open your system preferences as shown in the icon below.



2. Choose the network option.



3. Select Wi-Fi on the left hand side and make sure that Wi-Fi is turned on, in the right side.



4. Select advanced Button and then click the Plus icon to add a network.



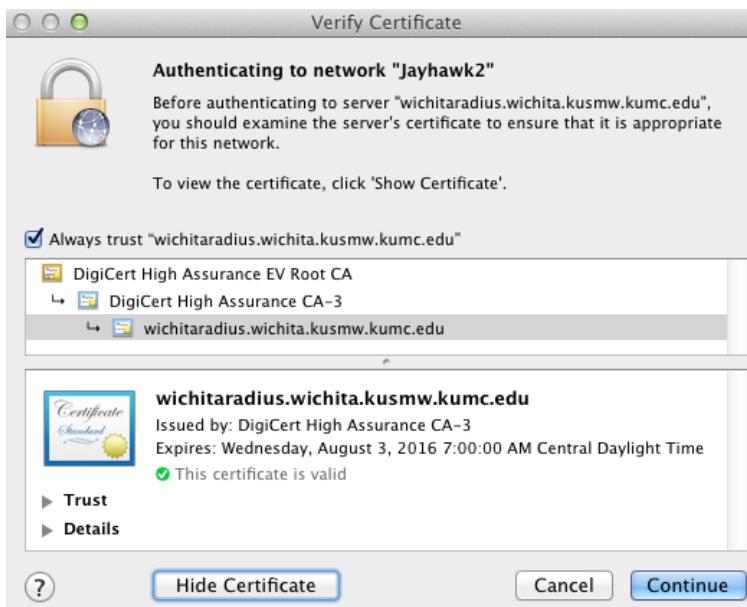
5. Enter the information below using your current Wichita account credentials.



6. After you have entered the info then click on OK and it will probably return the screen below.



7. Click on "Show Certificate" and you will see that it is coming from the "wichitaradius" server so it is OK to click continue.



- You may be prompted to enter credentials to allow the change in settings, this would be whatever account info that you use to log into your MAC, then select "Update settings".



- The screen below should be what you see when done and connected. (IP address will vary)

