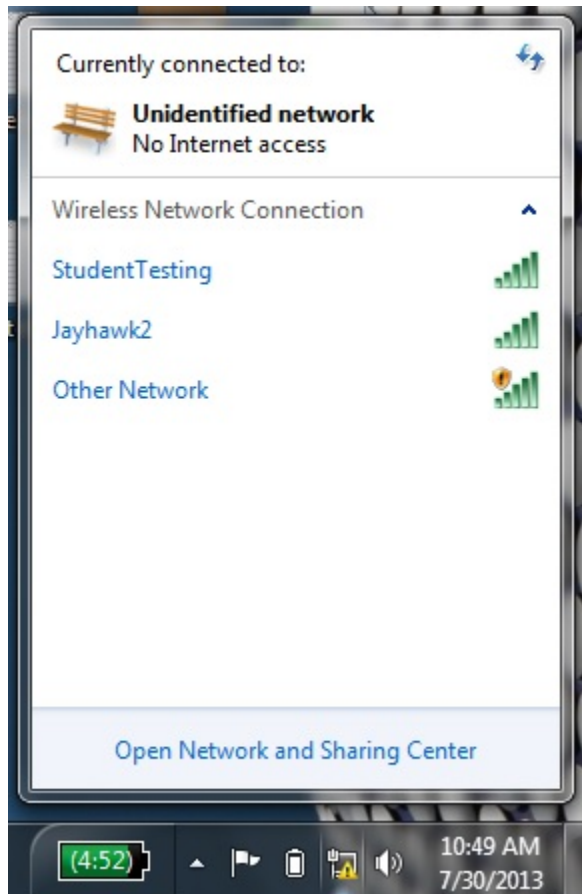


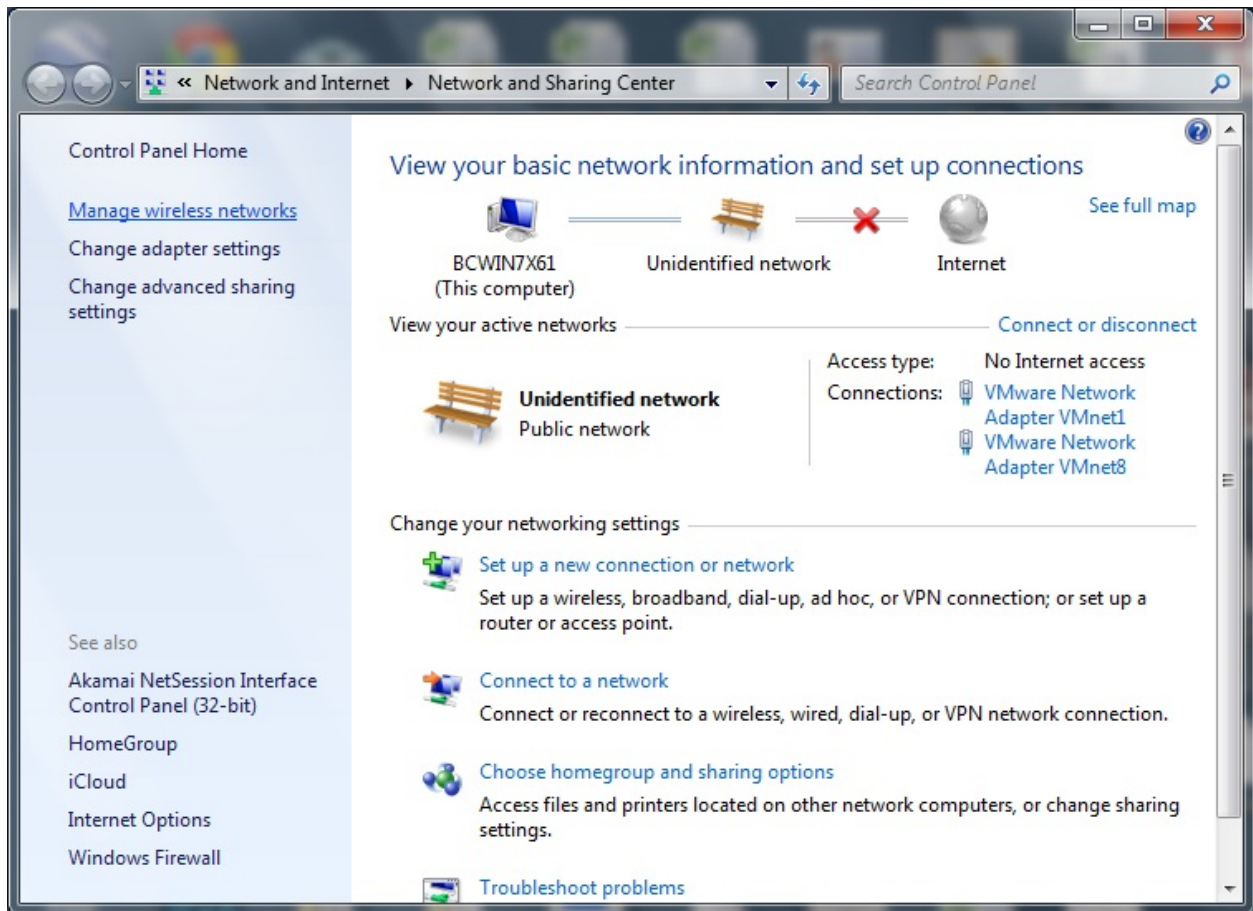
Configuration Instructions for Windows 7 Connections to Jayhawk2 Wireless

To establish a wireless connection to the Jayhawk2 network at KU-Wichita follow these steps.

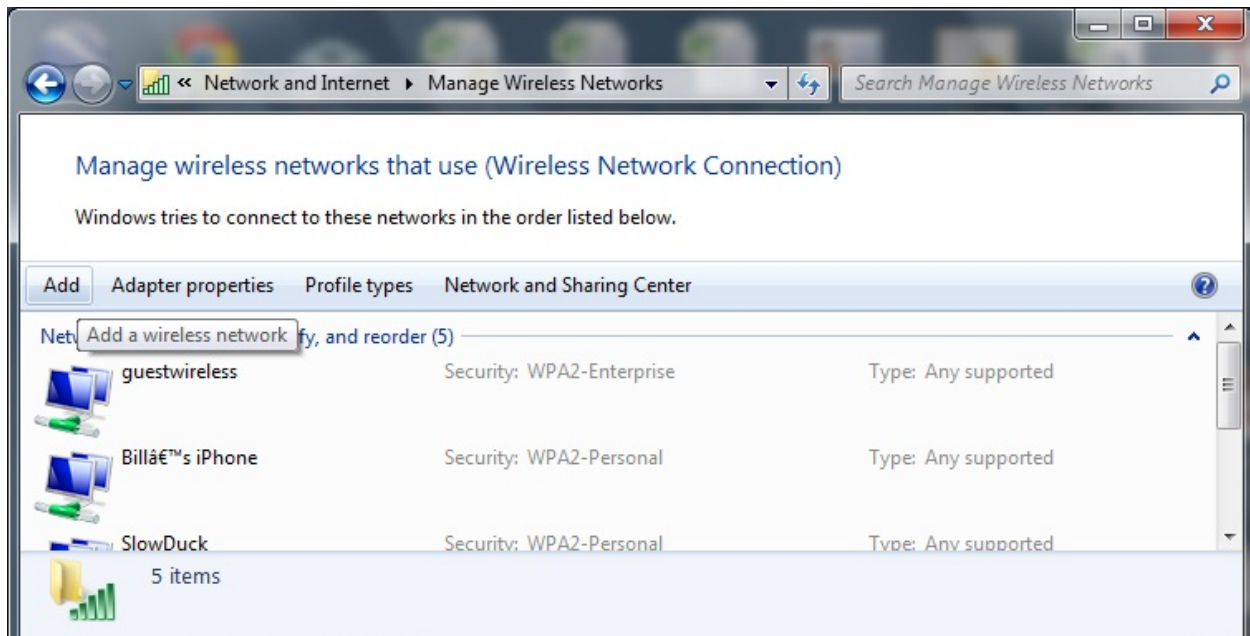
Initially, the network icon on your Windows 7 computer will indicate there is a network, but the connection is not fully established. Click on the network icon and then click on “Open Network and Sharing Center”



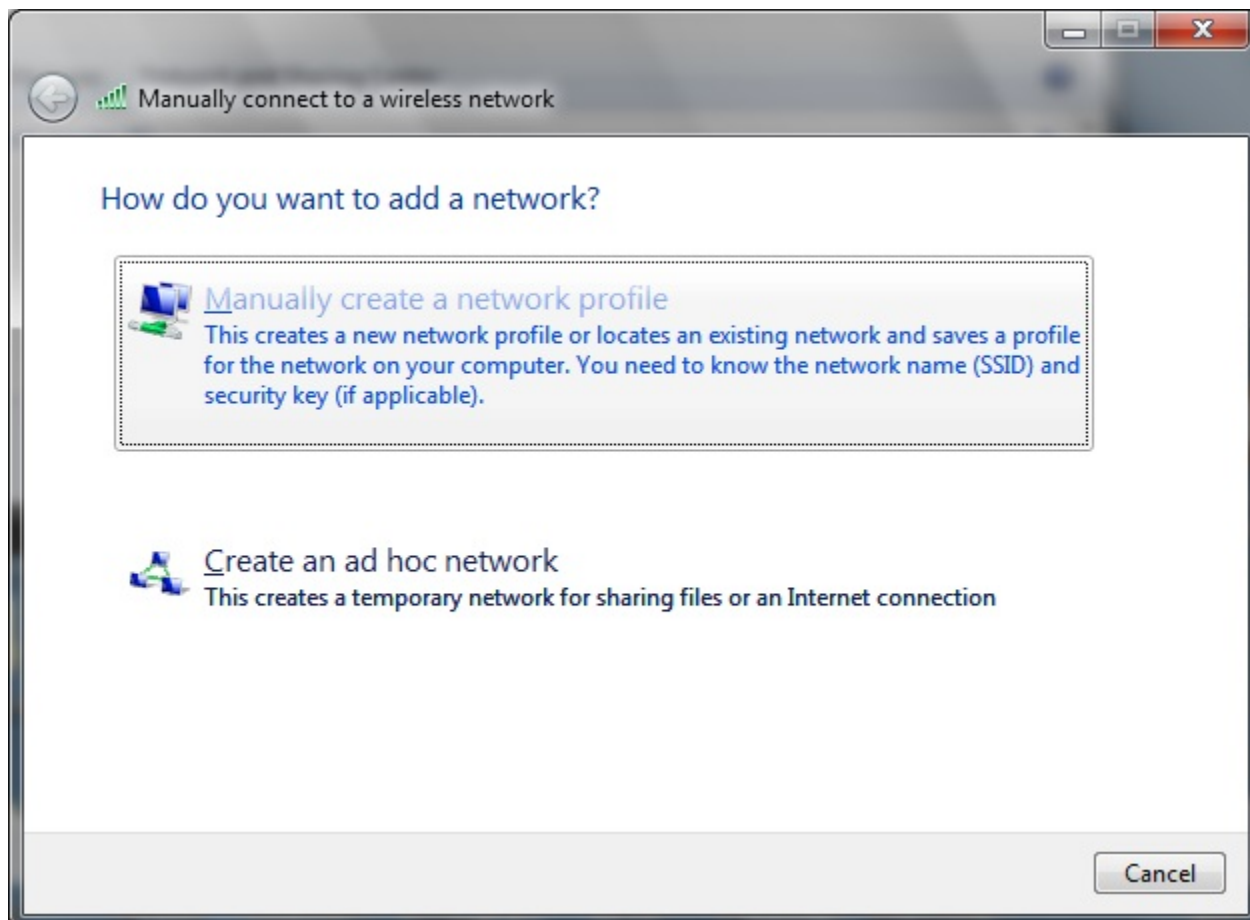
Click on “Manage wireless networks” link.



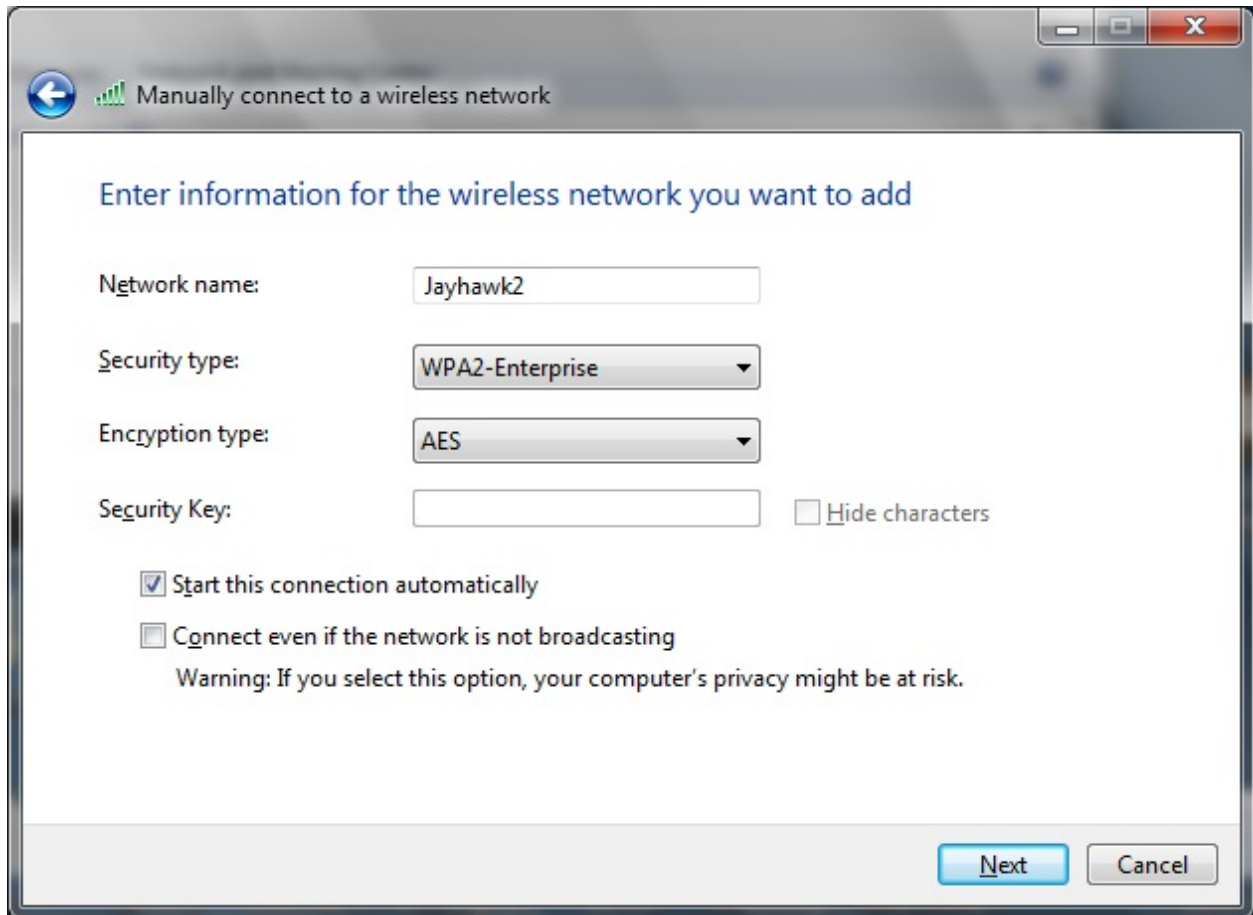
Click on the "Add" button.



Click "Manually Create a network profile".



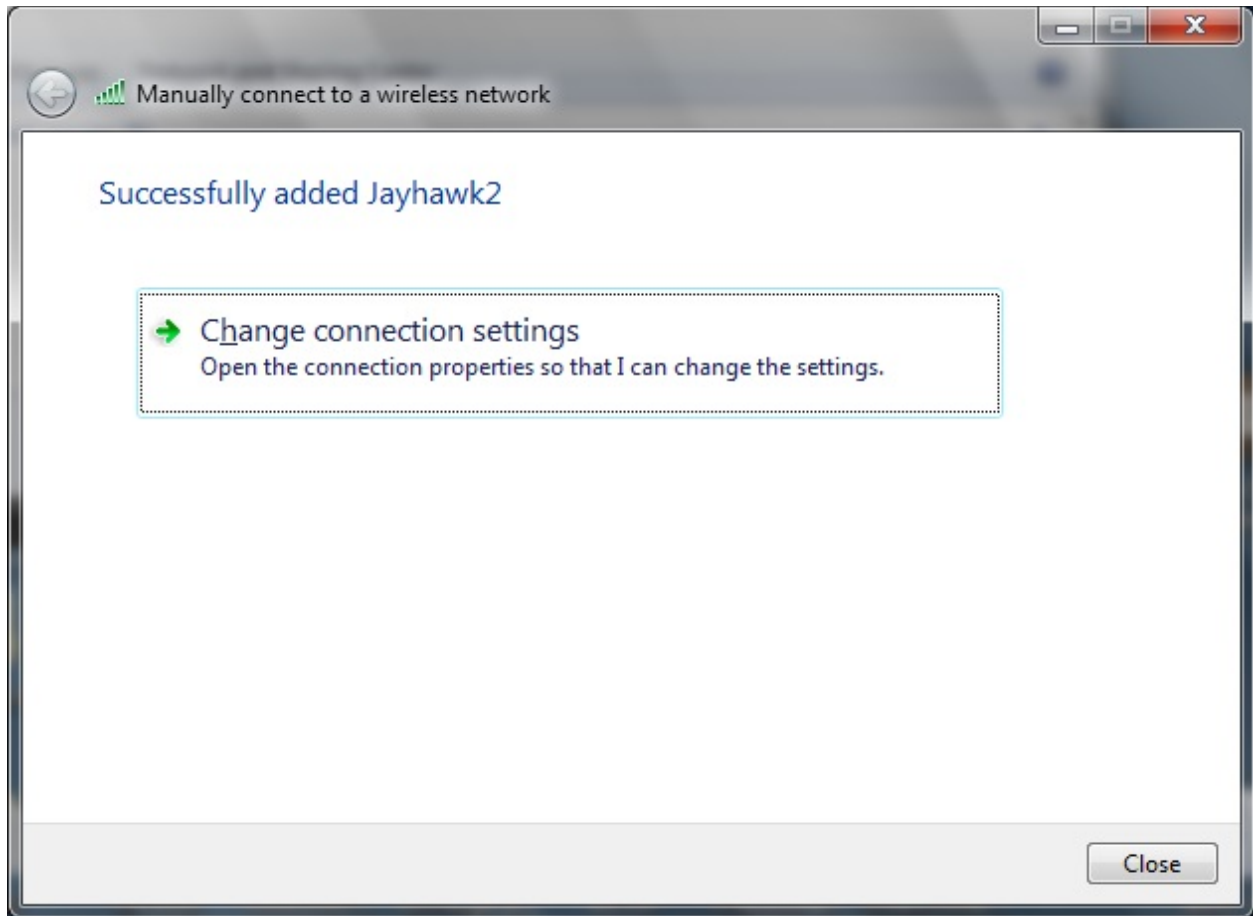
Populate the Network name field with “Jayhawk2”. Select “WPA2-Enterprise” for the Security type and “AES” for the Encryption type. Check the “Start this connection automatically” box. Click “Next” to proceed.



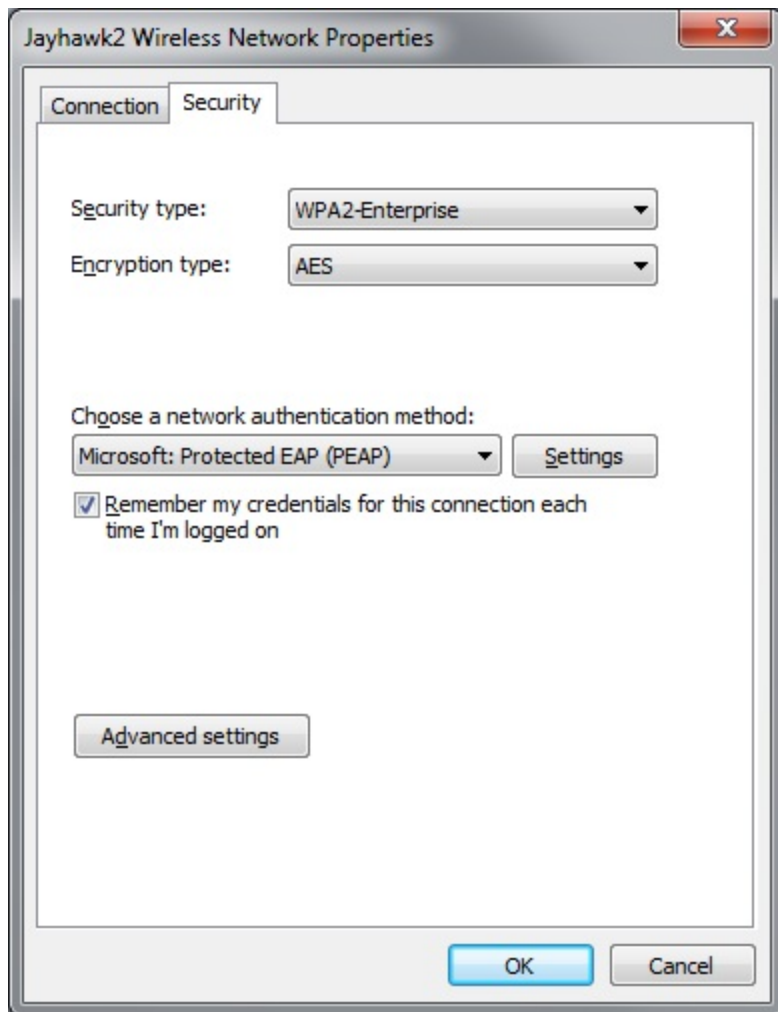
The screenshot shows a Windows dialog box titled "Manually connect to a wireless network". The main heading is "Enter information for the wireless network you want to add". The form contains the following fields and options:

- Network name: Text box containing "Jayhawk2".
- Security type: Dropdown menu set to "WPA2-Enterprise".
- Encryption type: Dropdown menu set to "AES".
- Security Key: Text box, currently empty, with a "Hide characters" checkbox to its right.
- Start this connection automatically: Checked checkbox.
- Connect even if the network is not broadcasting: Unchecked checkbox.
- Warning: "Warning: If you select this option, your computer's privacy might be at risk." (This warning is associated with the "Connect even if the network is not broadcasting" option).
- Next and Cancel buttons at the bottom right.

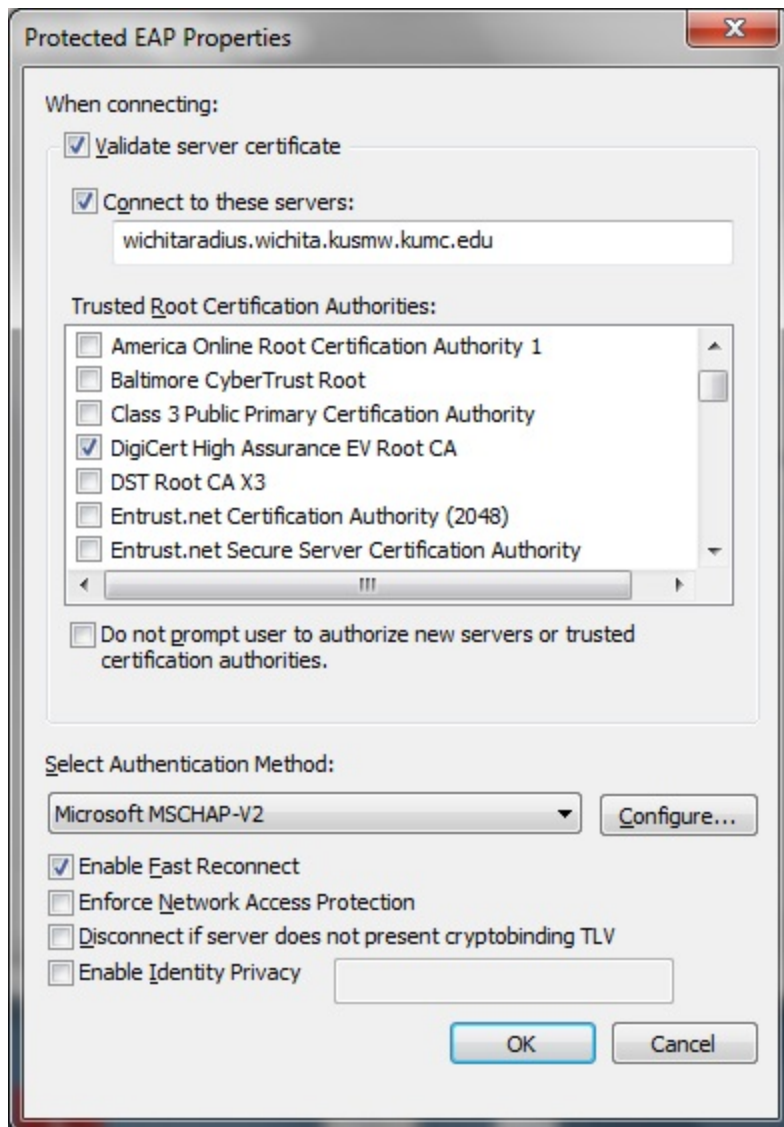
Click the “Change connection settings” link, and then click on the security tab of the next window.



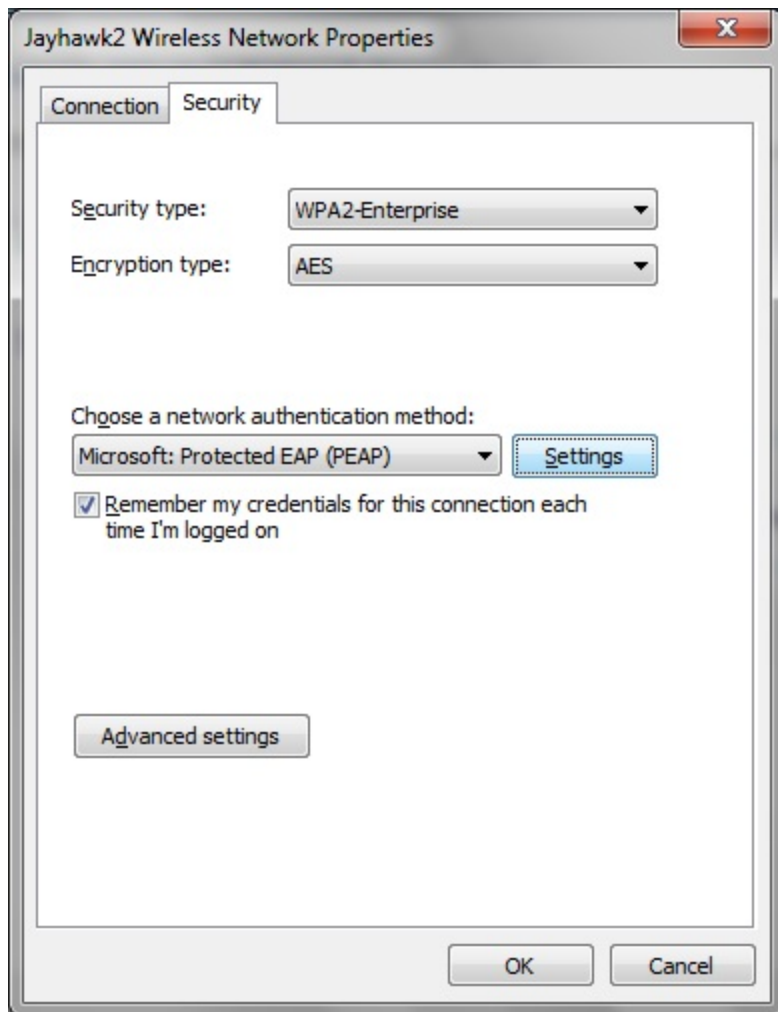
Click on the "Settings" button next to the Microsoft: Protected EAP (PEAP) listing.



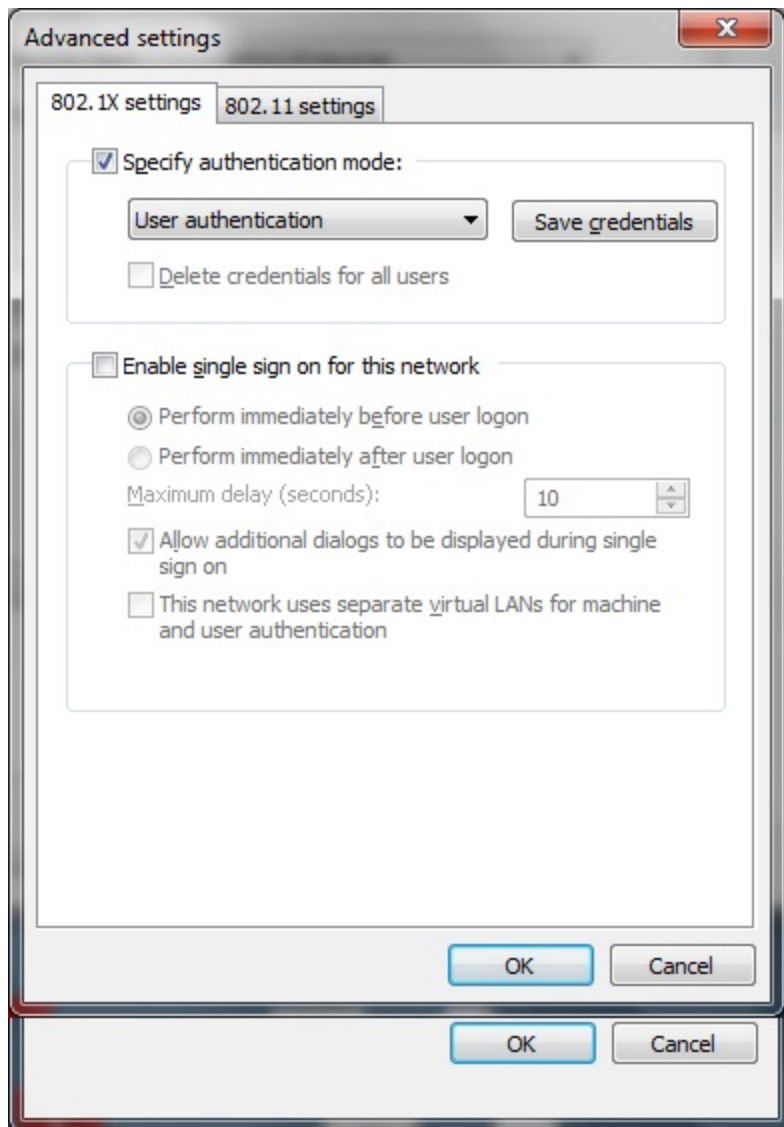
In the Protected EAP Properties window – make sure the “Validate server certificate” box is checked as well as the box for “Connect to these servers:” Enter in the “wichitaradius.wichita.kusmw.kumc.edu” in the field for that option. Under Trusted Root Certification Authorities select the check box for “DigiCert High Assurance EV Root CA”. Uncheck any other boxes in this area. Also, click on the “Configure” button. This brings up a smaller window with EAP MSCHAPv2 Properties. Make sure the check box in this area is unchecked. Click OK on this window and OK on the next, which will close the main Protected EAP Properties window.



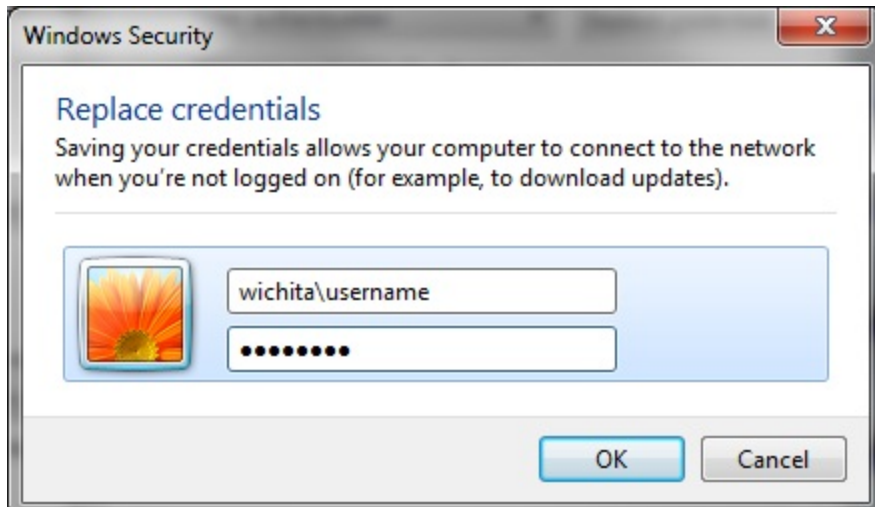
This brings you back to the Jayhawk2 Wireless Network Properties window - click on the “Advanced Settings” button.



Advanced Settings – Check the box for “Specify authentication mode” and select “User authentication”.



Click on the button to “Save credentials”.



Windows Security – Enter your network username and password with the domain prefix of “Wichita\”. Click “OK” and “OK” again on both the “Advanced Settings” and “Jayhawk2 Wireless Network Properties windows”.

Close the window once you see the dialog indicating Jayhawk2 has been successfully added. Your connection should be established automatically.